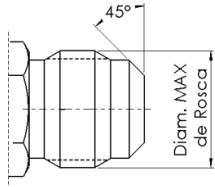
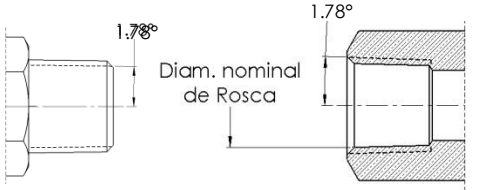


# Codos



FM

FH



NPT/M

NPT/H

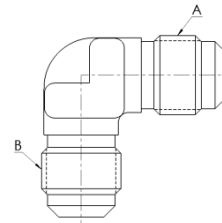
**Tipos de Rosca para Codos**



Acoplamiento		Standard de Rosca	Clasificación de Rosca	
F:	SAE Flare 45°	UN - ASME B1.1-2003	M:	Macho
NPT:	-	NPT - ASME B1.20.1-83	H:	Hembra

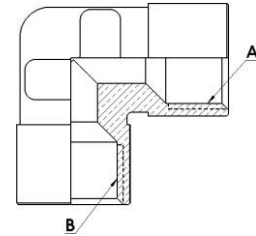
Denominación	A	B	Código
	SAE FLARE		
	pulg.	pulg.	
FM-FM	3/16"	3/16"	PFCO01001
	1/4"	3/16"	PFCO01006
		1/4"	PFCO01003
	5/16"	1/4"	PFCO01011
		5/16"	PFCO01010
	3/8"	1/4"	PFCO01057
		5/16"	PFCO01059
		3/8"	PFCO01061
	1/2"	1/4"	PFCO01090
		5/16"	PFCO01092
		3/8"	PFCO01094
		1/2"	PFCO01096
	5/8"	1/4"	PFCO01237
		3/8"	PFCO01158
		1/2"	PFCO01160
		5/8"	PFCO01162
3/4"	3/8"	PFCO01177	
	1/2"	PFCO01179	
	5/8"	PFCO01181	
	3/4"	PFCO01183	

**Codos FM-FM**



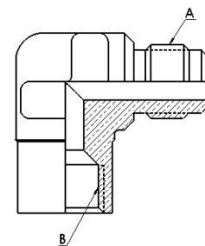
Denominación	A	B	Código
	SAE FLARE		
	pulg.	pulg.	
FH-FH	3/16"	3/16"	PFCO01002
	1/4"	3/16"	PFCO01009
		1/4"	PFCO01004
	5/16"	1/4"	PFCO01027
		5/16"	PFCO01029
	3/8"	1/4"	PFCO01038
		5/16"	PFCO01040
		3/8"	PFCO01041
	1/2"	1/4"	PFCO01105
		5/16"	PFCO01107
		3/8"	PFCO01109
		1/2"	PFCO01110
	5/8"	3/8"	PFCO01169
1/2"		PFCO01171	
5/8"		PFCO01172	

**Codos FH-FH**



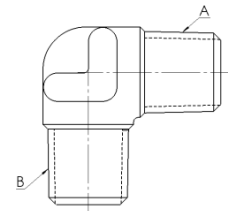
Denominación	A	B	Código
	FM	FH	
	pulg.	pulg.	
FM-FH	3/16"	3/16"	PFCO01243
		1/4"	PFCO01008
	1/4"	3/16"	PFCO01007
		1/4"	PFCO01005
		5/16"	PFCO01026
		3/8"	PFCO01037
		1/2"	PFCO01104
	5/16"	1/4"	PFCO01012
		5/16"	PFCO01028
		3/8"	PFCO01039
		1/2"	PFCO01106
	3/8"	1/4"	PFCO01058
		5/16"	PFCO01030
		3/8"	PFCO01062
		1/2"	PFCO01108
	5/8"	PFCO01168	

**Codos FM-FH**



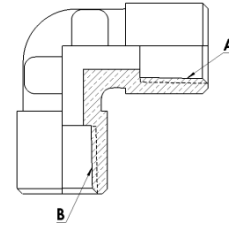
Denominación	A	B	Código
	FM	FH	
	pulg.	pulg.	
FM-FH	1/2"	1/4"	PFCO01091
		5/16"	PFCO01093
		3/8"	PFCO01095
		1/2"	PFCO01097
		5/8"	PFCO01170
	5/8"	3/8"	PFCO01159
		1/2"	PFCO01161
		5/8"	PFCO01163
	3/4"	3/8"	PFCO01178
		1/2"	PFCO01180
		5/8"	PFCO01182

Denominación	A	B	Código
	NPT/M	NPT/M	
	pulg.	pulg.	
NPT-M x NPT-M	1/8"	1/8"	PFCO01013
	1/4"	1/8"	PFCO01074
		1/4"	PFCO01076
	3/8"	1/8"	PFCO01085
		1/4"	PFCO01087
		3/8"	PFCO01089
	1/2"	1/4"	PFCO01153
		3/8"	PFCO01155
		1/2"	PFCO01157
	3/4"	3/8"	PFCO01212
		1/2"	PFCO01214
		3/4"	PFCO01216

**Codos NPT-M / NPT-M**


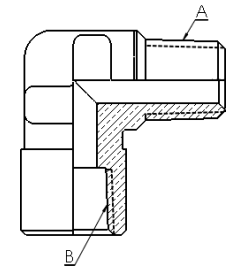
Denominación	A	B	Código
	NPT/H	NPT/H	
	<b>pulg.</b>	<b>pulg.</b>	
NPT-H x NPT-H	1/8"	1/8"	PFCO01017
	1/4"	1/8"	PFCO01054
		1/4"	PFCO01055
	3/8"	1/8"	PFCO01242
		1/4"	PFCO01126
		3/8"	PFCO01128
	1/2"	1/4"	PFCO01140
		3/8"	PFCO01142
		1/2"	PFCO01144

**Codos NPT-H / NPT-H**



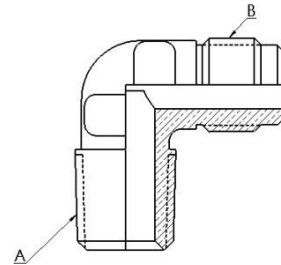
Denominación	A	B	Código
	NPT/M	NPT/H	
	<b>pulg.</b>	<b>pulg.</b>	
NPT-M x NPT-H	1/8"	1/8"	PFCO01021
		1/4"	PFCO01053
	1/4"	1/8"	PFCO01075
		1/4"	PFCO01077
		3/8"	PFCO01125
		1/2"	PFCO01139
	3/8"	1/8"	PFCO01086
		1/4"	PFCO01056
		3/8"	PFCO01127
		1/2"	PFCO01141
	1/2"	1/4"	PFCO01154
		3/8"	PFCO01156
		1/2"	PFCO01143
	3/4"	3/8"	PFCO01213
		1/2"	PFCO01215

**Codos NPT-M / NPT-H**



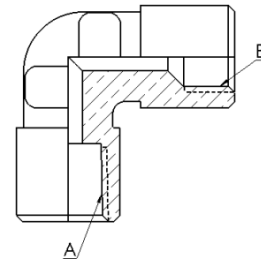
Denominación	A	B	Código
	NPT/M	SAE FLARE	
	pulg.	pulg.	
NPT-M x FM	1/8"	3/16"	PFCO01014
		1/4"	PFCO01015
		5/16"	PFCO01016
		3/8"	PFCO01063
	1/4"	3/16"	PFCO01244
		1/4"	PFCO01068
		5/16"	PFCO01070
		3/8"	PFCO01065
		1/2"	PFCO01098
	3/8"	1/4"	PFCO01079
		5/16"	PFCO01081
		3/8"	PFCO01067
		1/2"	PFCO01100
		5/8"	PFCO01164
		3/4"	PFCO01185
	1/2"	1/4"	PFCO01145
		5/16"	PFCO01147
		3/8"	PFCO01149
		1/2"	PFCO01102
		5/8"	PFCO01166
		3/4"	PFCO01187
	3/4"	3/8"	PFCO01204
		1/2"	PFCO01206
		5/8"	PFCO01208
3/4"		PFCO01189	

**Codos NPT-M / FM**



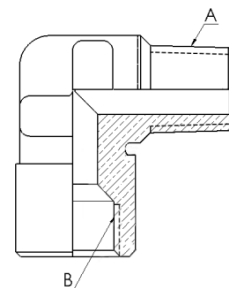
Denominación	A	B	Código
	NPT/H	SAE FLARE	
	pulg.	pulg.	
NPT-H x FH	1/8"	3/16"	PFCO01018
		1/4"	PFCO01019
		5/16"	PFCO01033
		3/8"	PFCO01043
	1/4"	3/16"	PFCO01249
		1/4"	PFCO01048
		5/16"	PFCO01035
		3/8"	PFCO01045
		1/2"	PFCO01112
	3/8"	1/4"	PFCO01118
		5/16"	PFCO01120
		3/8"	PFCO01122
		1/2"	PFCO01114
		5/8"	PFCO01174
		1/4"	PFCO01132
		5/16"	PFCO01134
		3/8"	PFCO01136
		1/2"	PFCO01116
	5/8"	PFCO01176	

**Codos NPT-H / FH**



Denominación	A	B	Código
	NPT/M	SAE FLARE	
	pulg.	pulg.	
NPT-M x FH	1/8"	3/16"	PFCO01020
		1/4"	PFCO01022
		5/16"	PFCO01032
		3/8"	PFCO01042
	1/4"	3/16"	PFCO01245
		1/4"	PFCO01069
		5/16"	PFCO01034
		3/8"	PFCO01044
		1/2"	PFCO01111
	3/8"	1/4"	PFCO01080
		5/16"	PFCO01036
		3/8"	PFCO01046
		1/2"	PFCO01113
		5/8"	PFCO01173

**Codos NPT-M / FH**



Denominación	A	B	Código
	NPT/M	SAE FLARE	
	pulg.	pulg.	
NPT-M x FH	1/2"	1/4"	PFCO01146
		5/16"	PFCO01148
		3/8"	PFCO01150
		1/2"	PFCO01115
	3/4"	5/8"	PFCO01175
		3/8"	PFCO01205
		1/2"	PFCO01207
		5/8"	PFCO01209

Denominación	A	B	Código
	NPT/H	SAE FLARE	
	pulg.	pulg.	
NPT-H x FM	1/8"	3/16"	PFCO01246
		1/4"	PFCO01234
		5/16"	PFCO01247
		3/8"	PFCO01064
	1/4"	3/16"	PFCO01248
		1/4"	PFCO01047
		5/16"	PFCO01049
		3/8"	PFCO01051
		1/2"	PFCO01099
	3/8"	1/4"	PFCO01117
		5/16"	PFCO01119
		3/8"	PFCO01121
		1/2"	PFCO01101
		5/8"	PFCO01165
		3/4"	PFCO01186
	1/2"	1/4"	PFCO01131
		5/16"	PFCO01133
		3/8"	PFCO01135
		1/2"	PFCO01103
		5/8"	PFCO01167
3/4"		PFCO01188	

**Codos NPT-H / FM**

