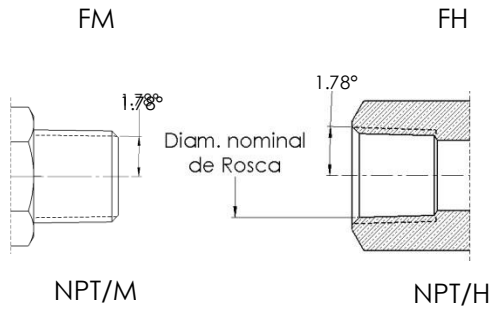
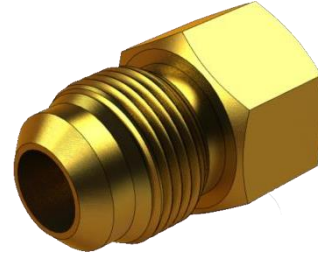


Reducciones



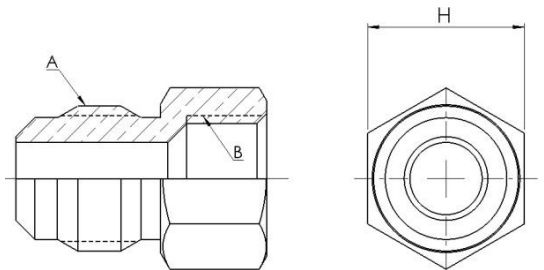
Tipos de Rosca para Reducciones



Acoplamiento		Standard de Rosca	Clasificación de Rosca	
F:	SAE Flare 45°	UN - ASME B1.1-2003	M:	Macho
NPT:	-	NPT - ASME B1.20.1-83	H:	Hembra

Reducciones FM-FH

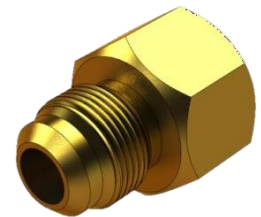
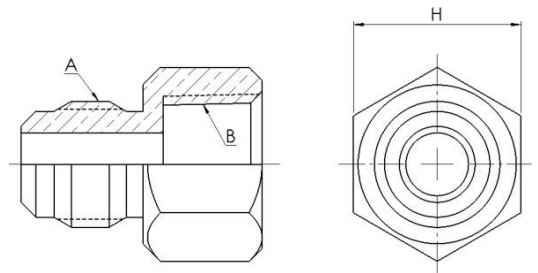
Denominación	A	B	H	Código
	SAE FLARE			
	pulg.	pulg.	mm (pulg.)	
FM-FH	3/16"	3/16"	12.70 (1/2")	PFRD00700
		1/4"	14.29 (9/16")	PFRD00701
	1/4"	1/4"	14.29 (9/16")	PFRD00702
		3/16"	12.70 (1/2")	PFRD00703
		5/16"	17.46 (11/16")	PFRD00704
		3/8"	20.64 (13/16")	PFRD00705
		1/2"	23.81 (15/16")	PFRD00706
		5/8"	26.98 (1-1/16")	PFRD00707
	5/16"	3/4"	31.75 (1-1/4")	PFRD00708
		5/16"	15.88 (5/8")	PFRD00709
		3/16"	12.70 (1/2")	PFRD00710
		1/4"	14.29 (9/16")	PFRD00711
		3/8"	20.64 (13/16")	PFRD00712
		1/2"	23.81 (15/16")	PFRD00713
		5/8"	26.98 (1-1/16")	PFRD00714
	3/4"	31.75 (1-1/4")	PFRD00715	



Denominación	A	B	H	Código
	SAE FLARE			
	pulg.	pulg.	mm (pulg.)	
FM-FH	3/8"	3/8"	20.64 (13/16")	PFRD00716
		3/16"	15.88 (5/8")	PFRD00717
		1/4"	15.88 (5/8")	PFRD00718
		5/16"	15.88 (5/8")	PFRD00719
		1/2"	23.81 (15/16")	PFRD00720
		5/8"	26.98 (1-1/16")	PFRD00721
		3/4"	31.75 (1-1/4")	PFRD00722
	1/2"	1/2"	23.81 (15/16")	PFRD00723
		1/4"	19.05 (3/4")	PFRD00724
		5/16"	19.05 (3/4")	PFRD00725
		3/8"	20.64 (13/16")	PFRD00726
		5/8"	26.98 (1-1/16")	PFRD00727
		3/4"	31.75 (1-1/4")	PFRD00728
		7/8"	34.93 (1-3/8")	PFRD00729
	5/8"	5/8"	26.98 (1-1/16")	PFRD00730
		1/4"	22.22 (7/8")	PFRD00731
		3/8"	22.22 (7/8")	PFRD00732
		1/2"	23.81 (15/16")	PFRD00733
		3/4"	31.75 (1-1/4")	PFRD00734
		7/8"	34.93 (1-3/8")	PFRD00735
	3/4"	3/4"	31.75 (1-1/4")	PFRD00736
		1/4"	26.98 (1-1/16")	PFRD00737
		3/8"	26.98 (1-1/16")	PFRD00738
		1/2"	26.98 (1-1/16")	PFRD00739
		5/8"	26.98 (1-1/16")	PFRD00740
		7/8"	34.93 (1-3/8")	PFRD00741
		1"	44.45 (1-3/4")	PFRD00742
	7/8"	7/8"	34.93 (1-3/8")	PFRD00743
		1/2"	31.75 (1-1/4")	PFRD00744
		5/8"	31.75 (1-1/4")	PFRD00745
		3/4"	31.75 (1-1/4")	PFRD00746
		1"	44.45 (1-3/4")	PFRD00747
1"	1"	44.45 (1-3/4")	PFRD00748	
	3/4"	34.93 (1-3/8")	PFRD00878	

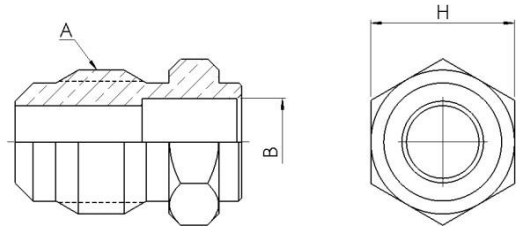
Reducciones FM-NPT/H

Denominación	A	B	H	Código
	SAE FLARE	NPT/H		
	pulg.	pulg.	mm (pulg.)	
FM - NPT/H	3/16"	1/8"	14.29 (9/16")	PFRD00775
		1/4"	17.46 (11/16")	PFRD00776
	1/4"	1/8"	14.29 (9/16")	PFRD00777
		1/4"	17.46 (11/16")	PFRD00778
		3/8"	22.22 (7/8")	PFRD00779
		1/2"	25.40 (1")	PFRD00780
		3/4"	31.75 (1-1/4")	PFRD00781
		1"	41.28 (1-5/8")	PFRD00879
	5/16"	1/8"	14.29 (9/16")	PFRD00782
		1/4"	17.46 (11/16")	PFRD00783
		3/8"	22.22 (7/8")	PFRD00784
		1/2"	25.40 (1")	PFRD00785
	3/8"	1/8"	14.29 (9/16")	PFRD00786
		1/4"	17.46 (11/16")	PFRD00787
		3/8"	20.64 (13/16")	PFRD00788
		1/2"	25.40 (1")	PFRD00789
		3/4"	31.75 (1-1/4")	PFRD00790
	1/2"	1/4"	19.05 (3/4")	PFRD00791
		3/8"	22.22 (7/8")	PFRD00792
		1/2"	25.40 (1")	PFRD00793
		3/4"	31.75 (1-1/4")	PFRD00794
	5/8"	1/4"	22.22 (7/8")	PFRD00795
		3/8"	22.22 (7/8")	PFRD00796
		1/2"	25.40 (1")	PFRD00797
		3/4"	31.75 (1-1/4")	PFRD00798
		1"	41.28 (1-5/8")	PFRD00799
	3/4"	3/8"	26.98 (1-1/16")	PFRD00800
		1/2"	26.98 (1-1/16")	PFRD00801
		3/4"	31.75 (1-1/4")	PFRD00802
		1"	41.28 (1-5/8")	PFRD00803
	7/8"	1/2"	31.75 (1-1/4")	PFRD00804
		3/4"	31.75 (1-1/4")	PFRD00805
1"		41.28 (1-5/8")	PFRD00806	
1"	3/4"	34.93 (1-3/8")	PFRD00807	
	1"	41.28 (1-5/8")	PFRD00808	

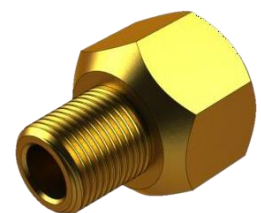
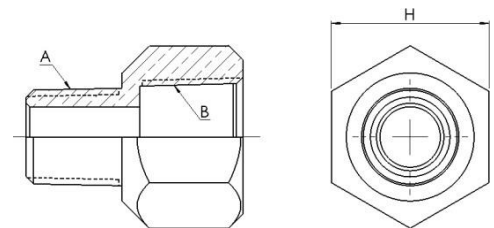


Reducciones FM-SH

Denominación	A	B	H	Código
	SAE FLARE	ODS Soldar		
	pulg.	pulg.	mm (pulg.)	
FM - SH	1/4"	1/4"	11.11 (7/16")	PFRD00849
	3/8"	5/16"	15.88 (5/8")	PFRD00880
		3/8"		PFRD00850
		1/2"		PFRD00851
	1/2"	3/8"	19.05 (3/4")	PFRD00853
		1/2"		PFRD00854
		5/8"		PFRD00855
	5/8"	3/4"	22.22 (7/8")	PFRD00856
		1/2"		PFRD00857
		5/8"		PFRD00858
	3/4"	3/4"	26.99 (1-1/16")	PFRD00859
		5/8"		PFRD00874
		7/8"		PFRD00860
	7/8"	1"	31.75 (1-1/4")	PFRD00861
		7/8"		PFRD00862
		7/8"		PFRD00863
	1"	7/8"	34.93 (1-3/8")	PFRD00897
1"		PFRD00881		
1-1/8"		PFRD00864		

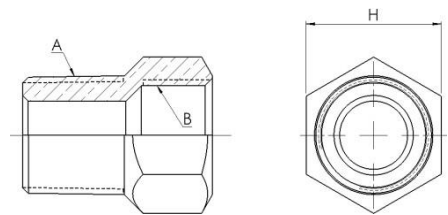

Reducciones NPT-M x NPT-H

Denominación	A	B	H	Código
	NPT-M	NPT-H		
	pulg.	pulg.	mm (pulg.)	
NPT-M x NPT-H	1/8"	1/8"	14.29 (9/16")	PFRD00749
		1/4"	17.46 (11/16")	PFRD00750
		3/8"	22.22 (7/8")	PFRD00751
		1/2"	25.40 (1")	PFRD00752
	1/4"	1/8"	14.29 (9/16")	PFRD00754
		1/4"	17.46 (11/16")	PFRD00753
		3/8"	22.22 (7/8")	PFRD00755
		1/2"	25.40 (1")	PFRD00756
	3/8"	3/4"	31.75 (1-1/4")	PFRD00757
		1/8"	17.46 (11/16")	PFRD00759
		1/4"		PFRD00760
		3/8"	22.22 (7/8")	PFRD00758
		1/2"	25.40 (1")	PFRD00761
	1"	3/4"	31.75 (1-1/4")	PFRD00762
		1"	41.28 (1-5/8")	PFRD00763



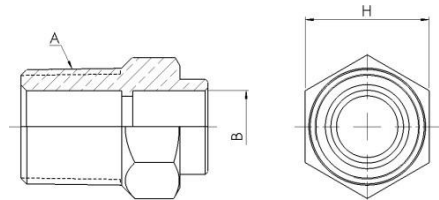
Denominación	A	B	H	Código
	NPT-M	NPT-H		
	pulg.	pulg.	mm (pulg.)	
NPT-M x NPT-H	1/2"	1/4"	22.22 (7/8")	PFRD00766
		3/8"		PFRD00767
		1/2"	25.40 (1")	PFRD00764
		3/4"	31.75 (1-1/4")	PFRD00768
		1"	41.28 (1-5/8")	PFRD00769
	3/4"	3/8"	26.99 (1-1/16")	PFRD00771
		1/2"		PFRD00772
		3/4"	31.75 (1-1/4")	PFRD00770
		1"	41.28 (1-5/8")	PFRD00773
	1"	1"	41.28 (1-5/8")	PFRD00774

Denominación	A	B	H	Código
	NPT-M	SAE FLARE		
	pulg.	pulg.	mm (pulg.)	
NPT-M x FH	1/8"	3/16"	12.70 (1/2")	PFRD00809
		1/4"	14.29 (9/16")	PFRD00811
		5/16"	17.46 (11/16")	PFRD00816
		3/8"	20.64 (13/16")	PFRD00820
	1/4"	3/16"	14.29 (9/16")	PFRD00810
		1/4"		PFRD00812
		5/16"	17.46 (11/16")	PFRD00817
		3/8"	20.64 (13/16")	PFRD00821
		1/2"	23.81 (15/16")	PFRD00825
		5/8"	26.99 (1-1/16")	PFRD00829
	3/8"	1/4"	17.46 (11/16")	PFRD00813
		5/16"		PFRD00818
		3/8"	20.64 (13/16")	PFRD00822
		1/2"	23.81 (15/16")	PFRD00826
		5/8"	26.99 (1-1/16")	PFRD00830
		3/4"	31.75 (1-1/4")	PFRD00834
	1/2"	1/4"	22.22 (7/8")	PFRD00814
		5/16"		PFRD00819
		3/8"		PFRD00823
		1/2"	23.81 (15/16")	PFRD00827
		5/8"	26.99 (1-1/16")	PFRD00831
		3/4"	31.75 (1-1/4")	PFRD00835
		7/8"	34.93 (1-3/8")	PFRD00838

Reducciones NPT-M x FH


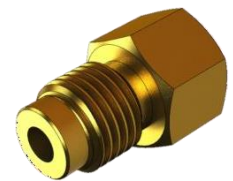
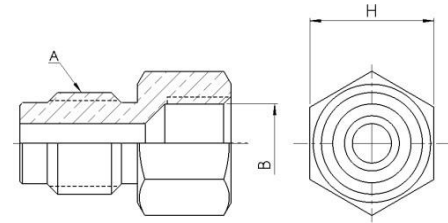
Denominación	A	B	H	Código
	NPT-M	SAE FLARE		
	pulg.	pulg.	mm (pulg.)	
NPT-M x FH	3/4"	1/4"	26.99 (1-1/16")	PFRD00815
		3/8"		PFRD00824
		1/2"		PFRD00828
		5/8"		PFRD00832
		3/4"	31.75 (1-1/4")	PFRD00836
		7/8"	34.93 (1-3/8")	PFRD00839
	1"	1"	44.45 (1-3/4")	PFRD00841
		5/8"	34.93 (1-3/8")	PFRD00833
				PFRD00837
				PFRD00840
				PFRD00842

Denominación	A	B	H	Código
	NPT-M	ODS Soldar		
	pulg.	pulg.	mm (pulg.)	
NPT/M - SH	1/2"	3/8"	22.22 (7/8")	PFRD00888
		1/2"		PFRD00867
	3/4"	1/2"	26.99 (1-1/16")	PFRD00865
		5/8"		PFRD00866
		7/8"		PFRD00866
				PFCT00101

Reducciones NPT-M x SH


Denominación	A	B	H	Código
	pulg.	pulg.	mm (pulg.)	
ACME/M - FH	1/2" ACME/M	1/4" FH	15.88 (5/8")	PFRD00843
ACME/M - NPT/H		1/8" NPT/H	14.29 (9/16")	PFRD00844
		1/4" NPT/H	17.46 (11/16")	PFRD00845
ACME/H - FM	1/2" ACME/H	1/4" FM	15.88 (5/8")	PFRD00882
ACME/H - NPT/M		1/8" NPT/M		PFRD00847
		1/4" NPT/M		PFRD00848

Reducciones ACME/M



Reducciones ACME/H

