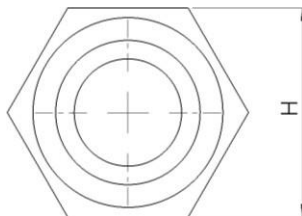
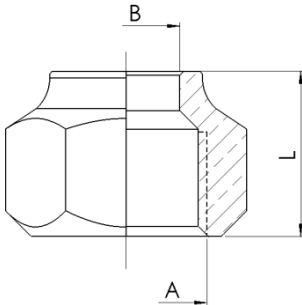


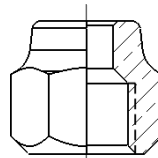
Tuercas Forjadas



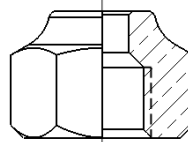
Tuerca Forjada



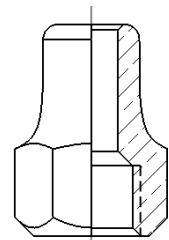
Tipo de cuello		Modelo		Línea	
CC:	Corto	S:	Standard	T:	Tidar
CL:	Largo	L:	Pesada	H:	Healer
R:	Con Reducción				



CC-S



CC-L



CL-S

Denominación	A	B	H	L	Código
	SAE FLARE				
		pulg.	mm (pulg.)	mm	
CC-ST	3/16"	3/16"	15.88 (5/8")	16.4	PFTF00252
	1/4"	1/4"			PFTF00250
CC-LH	1/4"	1/4"	19.05 (3/4")	15.4	PFTF00316
CC-SH	5/16"	5/16"	22.22 (7/8")	20	PFTF00253
	3/8"	3/8"			PFTF00315
CC-ST	1/2"	1/2"	25.4 (1")	23.4	PFTF00255
CC-SH	1/2"	1/2"		20	PFTF00313
CC-ST	5/8"	5/8"	26.98 (1-1/16")	22.8	PFTF00256
	3/4"	3/4"	34.93 (1-3/8")	29.4	PFTF00257
	7/8"	7/8"	38.10 (1-1/2")	34	PFTF00258
	1"	1"	44.45 (1-3/4")	40.4	PFTF00259
CL-ST	1/4"	1/4"	15.88 (5/8")	25.4	PFTF00306
	3/8"	3/8"	22.22 (7/8")	28.8	PFTF00302
	1/2"	1/2"	25.4 (1")	30	PFTF00303
	5/8"	5/8"	28	33	PFTF00305
	3/4"	3/4"	34.93 (1-3/8")	43.4	PFTF00307

Denominación	A	B	H	L	Código
	SAE FLARE				
CCR-ST	1/4"	3/16"	15.88 (5/8")	16.4	PFTF00260
CCR-ST	5/16"	1/4"	19.05 (3/4")	15.4	PFTF00261
CCR-SH	3/8"	1/4"	22.22 (7/8")	20	PFTF00318
	3/8"	5/16"			PFTF00317
CCR-ST	1/2"	1/4"	25.4 (1")	23.4	PFTF00268
		3/8"			PFTF00263
CCR-SH		3/8"			20
CCR-ST	5/8"	1/2"	26.98 (1-1/16")	22.8	PFTF00264
	3/4"	5/8"	34.93 (1-3/8")	29.4	PFTF00265
	7/8"	3/4"	38.10 (1-1/2")	34	PFTF00266
	1"	7/8"	44.45 (1-3/4")	40.4	PFTF00267
		1-1/8"			PFTF00321
CLR-ST	1/4"	3/16"	15.88 (5/8")	25.4	PFTF00308
	3/8"	5/16"	22.22 (7/8")	28.8	PFTF00310
	1/2"	3/8"	25.4 (1")	30	PFTF00311
	5/8"	1/2"	28	33	PFTF00312